

Lullaby

(Dr. Lermag to Pryia)

*Changes
Chrisfull
7/2015*

Bb Dm7 Cm F7 Bb Bb Cm7 Cm7 F7 Bb Gm F/A



1. Goodnight my child close your eyes rest a while_ by my side You hold me and
2. Goodnight my child close your eyes Dream a while by my side You trust me and

7 Cm F7 Bb Cm Bb/F F Bb F7 Bb Dm



I'll hold you and come what may we'll see it through. As the man-go tree grows, it
I'll trust you and come what may we'll see this through

End.

12 Cm F7 Bb Cm F7 Bb Gm7



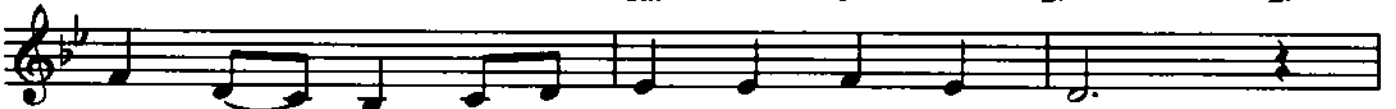
has to bear storms and wait for the sun to warm. No-thing ev-er goes (ex-
pre

16 F/A Eb/Bb Bb Cm7 F7 Bb Ebmaj7 F7/Eb



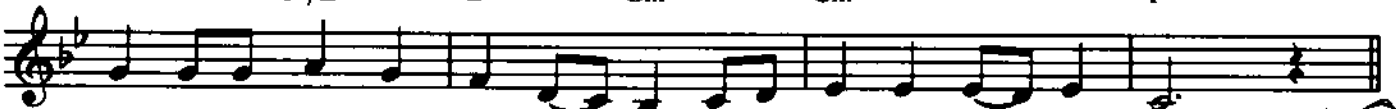
act-ly) as it's planned, so it is for man-goes, so it is for man. When ev-er life -
(Sely)
@.

20 Bb Gm7 Cm7 F7 Bbmaj7 Bb7



gets you down and you don't know what to do

23 Eb F7/Eb Bb Gm7 Cm7 F7



if you get scared just turn a - round and_ I'll be there for you. go to 2